

# TX2 SERIE

## Electric Transaxles

# Contents

Intro .....	3
Features .....	6
Motor Options .....	7
Versions .....	8
TX2 Serie Datasheet .....	9
TX2 Serie Plus Datasheet .....	13
Mounting Options .....	18
Wheel Hubs Options .....	19
Drum Brakes Options .....	20
Order Code .....	21
Benevelli Method .....	22

# Welcome to TX2 Serie

TX2 Serie consists in high performance electric transaxles for battery powered vehicles. Powertrain includes a gearbox with differential (diff-lock optional), rigid axle, brake system and electric motor.

## Application Sectors



AGRICULTURE



CLEANING



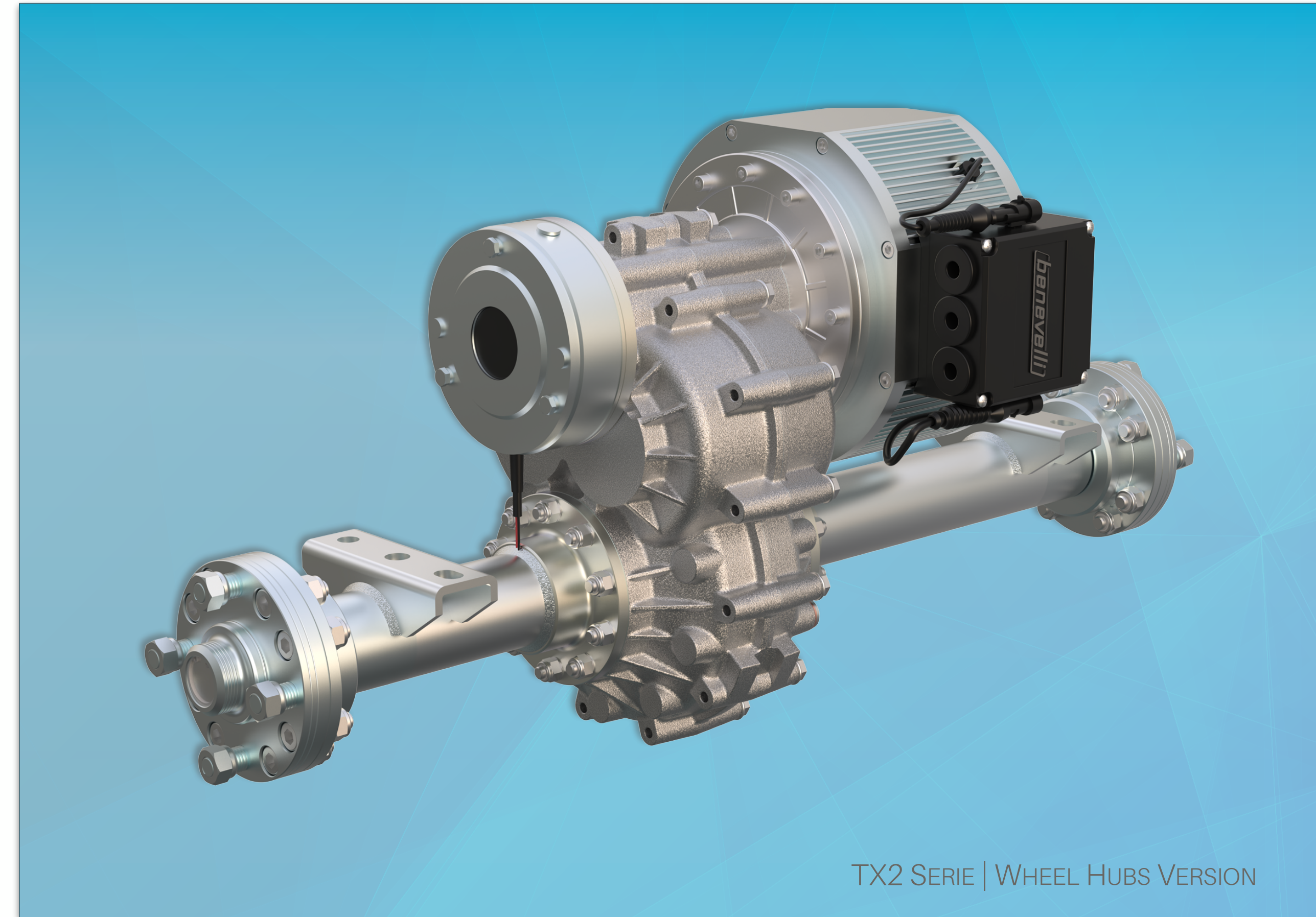
MATERIAL HANDLING



eMOBILITY



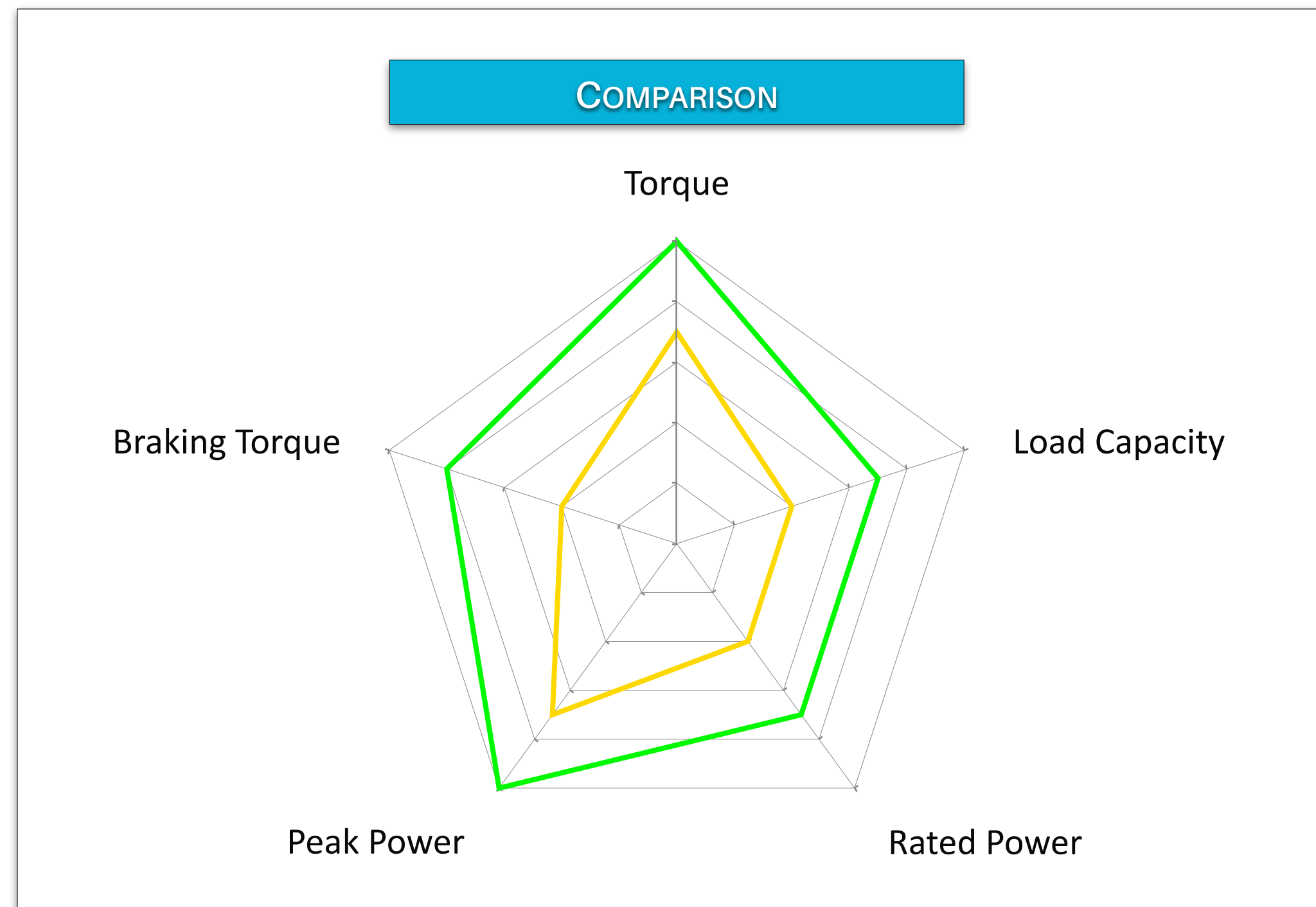
CONSTRUCTION



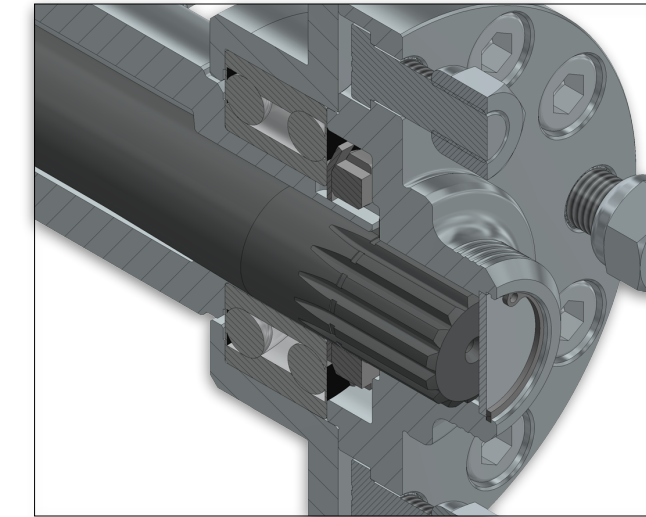
TX2 SERIE | WHEEL HUBS VERSION

	<b>TX2</b> SERIE	<b>TX2</b> SERIE PLUS
<b>Load Capacity</b>	1.000 kg	1.600 kg
<b>Torque Peak</b>	1.000 Nm	1.600 Nm
<b>Motor Power Rated</b>	3,0 to 10,0 kW	5,5 to 20,0 kW
<b>Motor Power Peak</b>	4,0 to 16,0 kW	8,0 to 30,0 kW
<b>Motor Voltage</b>	24 to 600 V	24 to 600 V
<b>Motor Type</b>	AC Induction	AC Induction   Synchronous IPM
<b>IP Rating</b>	IP 54 to 67	IP 54 to 6K9K
<b>Efficiency (Electrical)</b>	80 to 95%	80 to 95%
<b>Efficiency (Mechanical)</b>	95%	
<b>Available Ratios</b>	5 - 7 - 9 - 10 - 12 - 16 - 22 - 27 - 35 - 43 - 56 - 80	
<b>Input Speed Max</b>	7.200 rpm	
<b>Axle Width</b>	560 to 1.988 mm	
<b>Wheel Fitting</b>	Hub Piloted 4 - 5 Studs	
<b>Service Brakes</b>	Hydraulic	
<b>Parking Brakes</b>	Electromagnetic and/or Mechanical	
<b>Fixation System</b>	Mounting Brackets	
<b>Lubrication</b>	0,50 l Mobil 1 SHC 75W90 Oil	

# 1 Serie. 2 Families

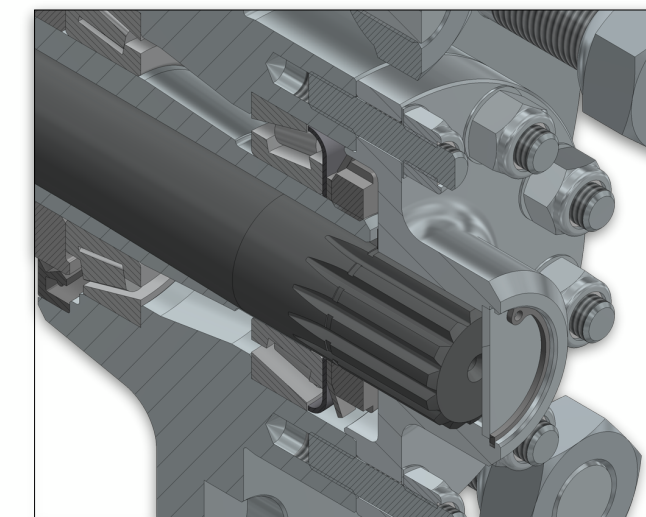


**TX2** SERIE — **TX2** SERIE PLUS —



## **TX2** SERIE

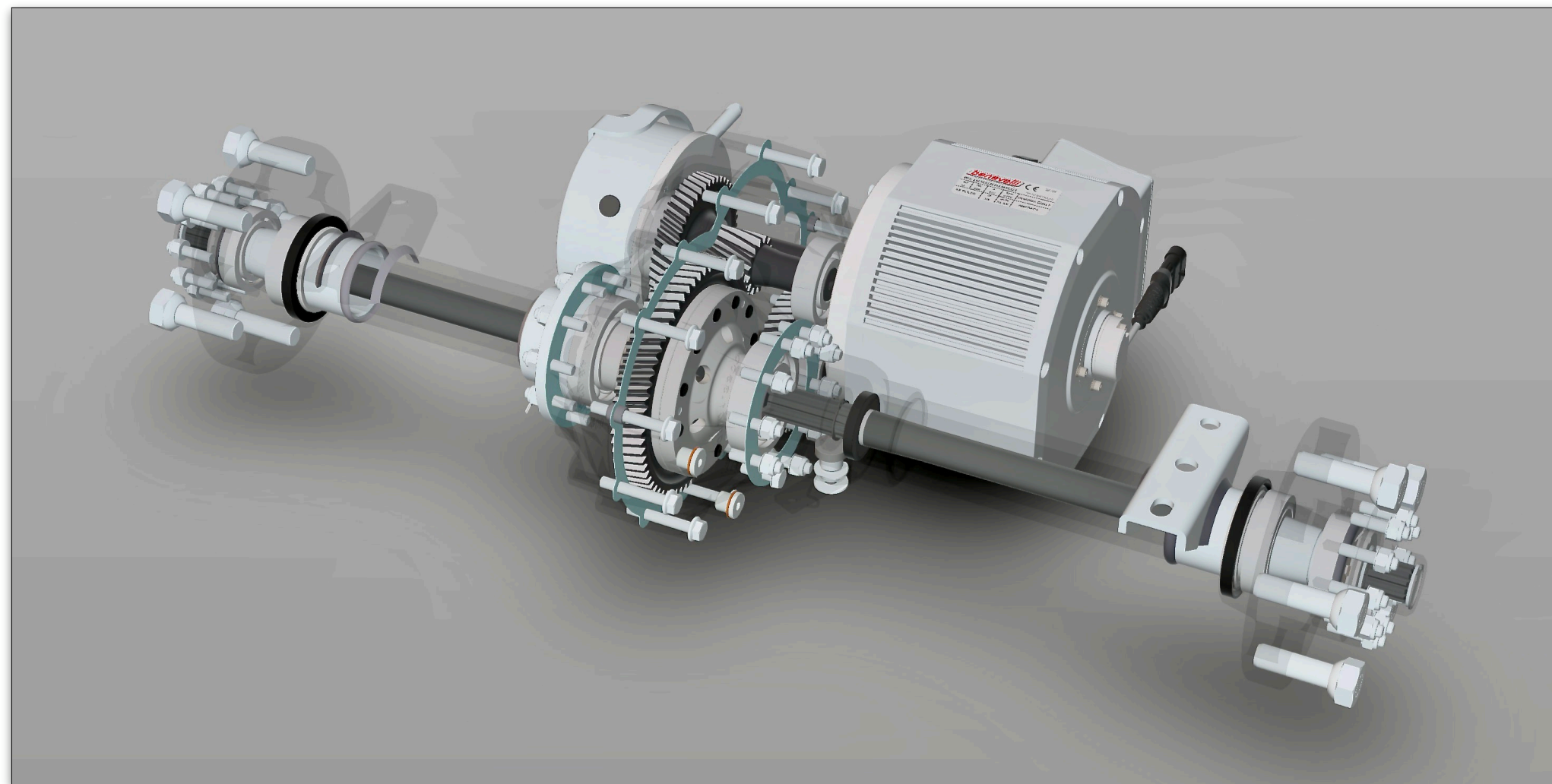
Best-selling version with full-floating axle and strong double row angular-contact bearing on wheels.



## **TX2** SERIE PLUS

The most powerful transaxle version ever with full-floating axle and tapered roller bearings.

# Features

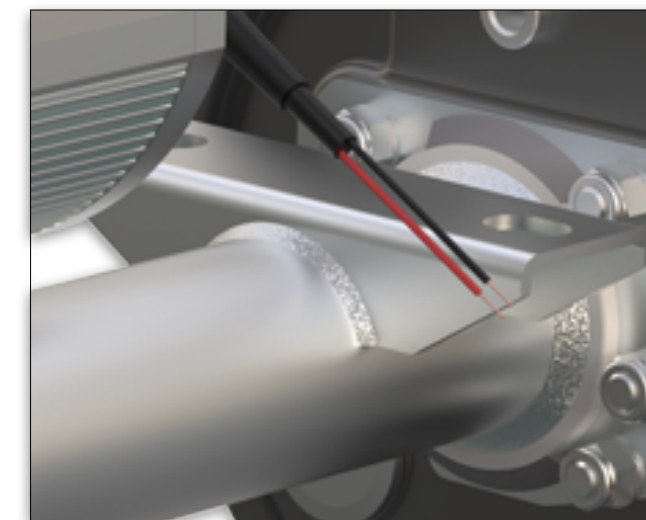


TX2 Serie is an entirely new electric transaxle. It packs outrageous performance, stunning silence and new capabilities, it delivers furthermore unbelievable power efficiency, a major breakthrough for your electric vehicles.



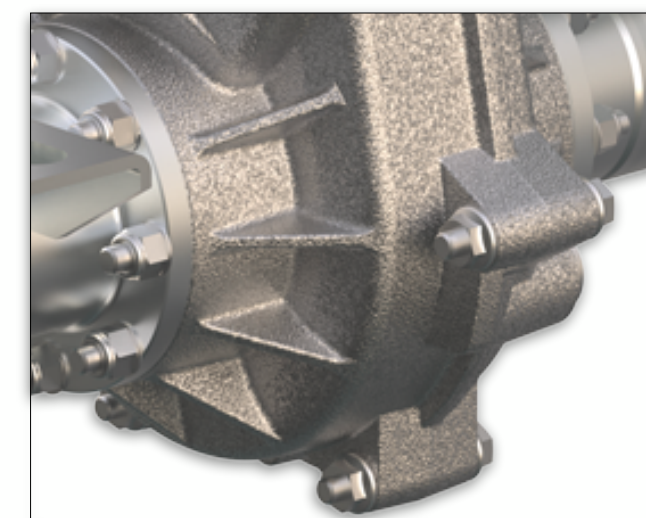
## Gears Class

Class 5 gears with optimized design ensure the highest level of efficiency and quiet operations to your e-vehicle.



## Modularity

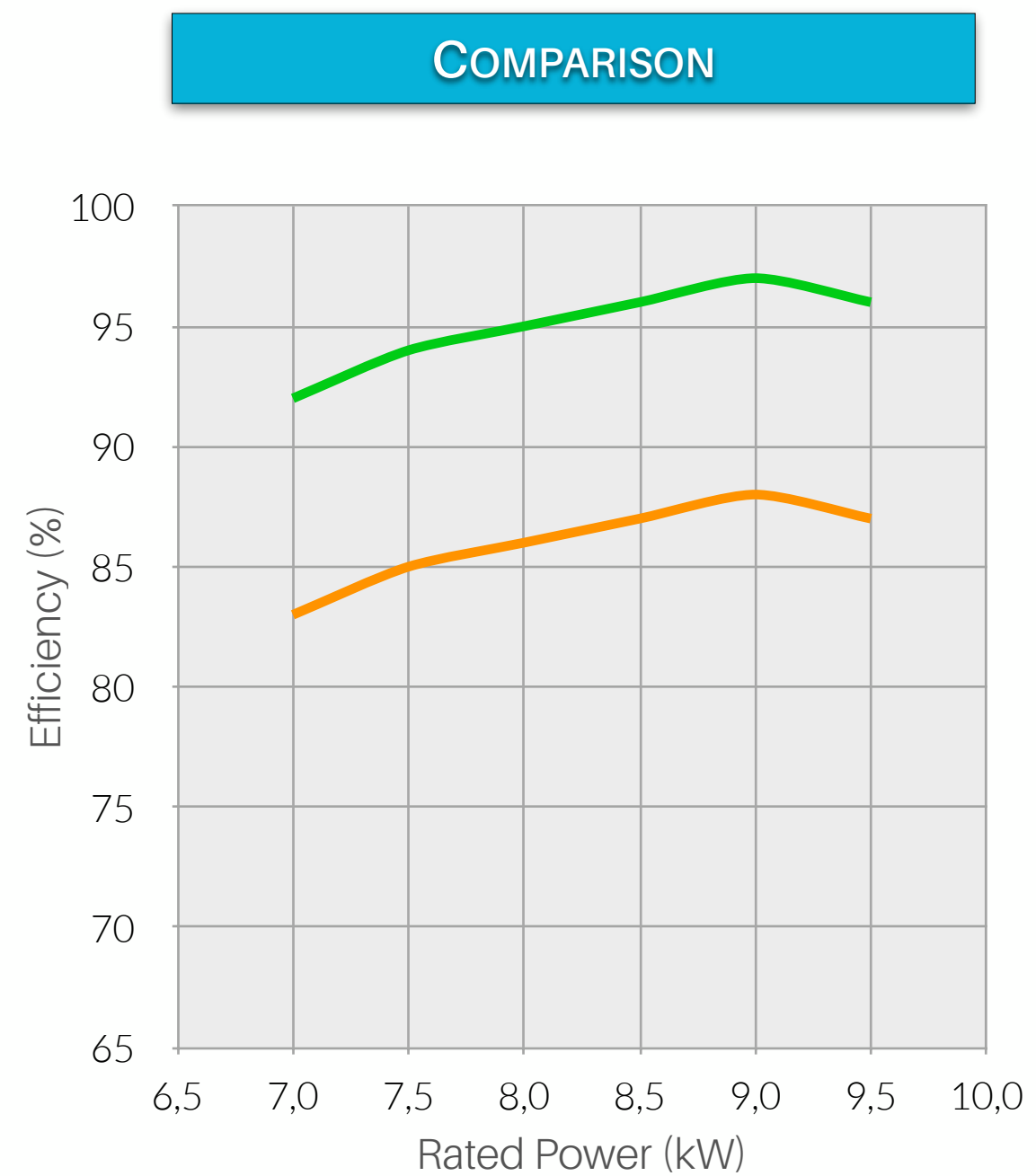
Modular system covers needs of electric vehicle manufacturers thanks to five standard mounting position.



## Rugged Design

Robust gearbox design & construction enable large payload minimizes weight and dimensions. Stunningly compact.

# Motor Options



**SMAC** SERIE — **AMAC** SERIE



## SMAC SERIE

Synchronous IPM motors, interior permanent magnets ensure constant torque and highest power density.

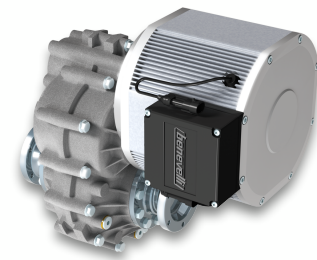


## AMAC SERIE

AC Induction motors ensure great flexibility of installation and great performances.

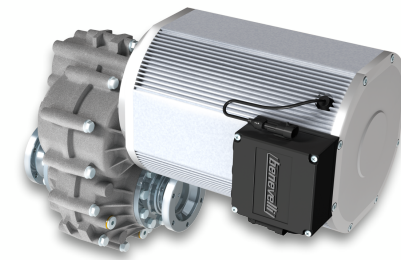
# All Models

**TX2** SERIE

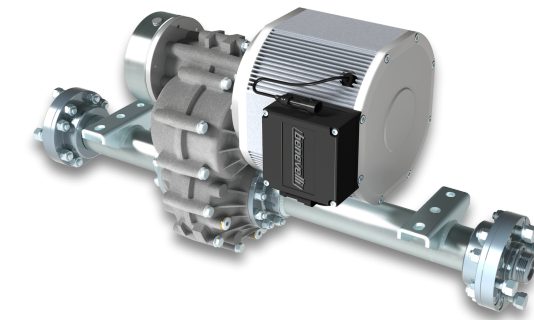


Pag. 9

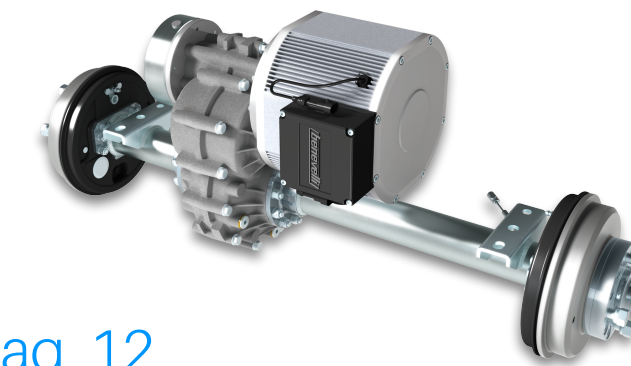
**4WD**



Pag. 10

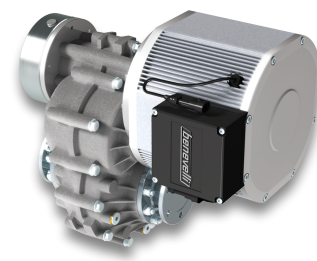


Pag. 11



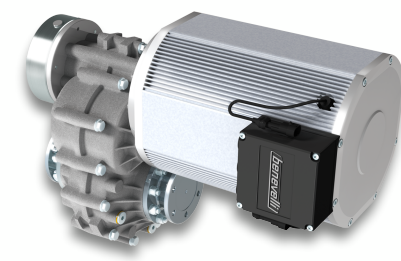
Pag. 12

**TX2** SERIE PLUS

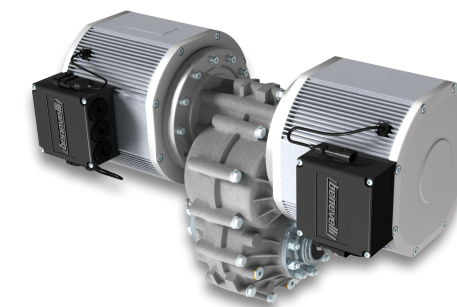


Pag. 13

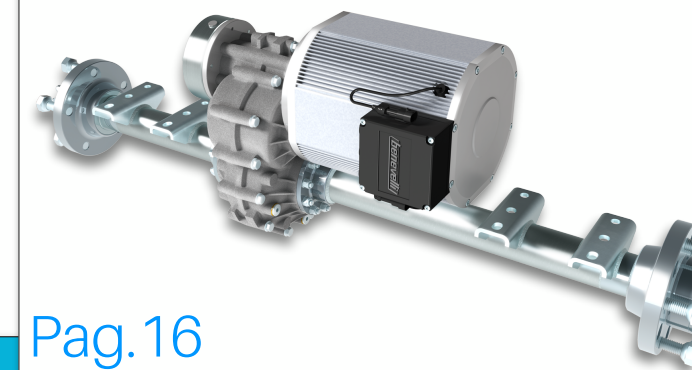
**4WD**



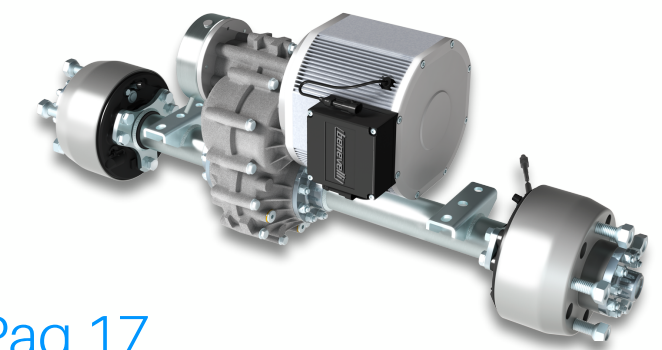
Pag. 14



Pag. 15



Pag. 16

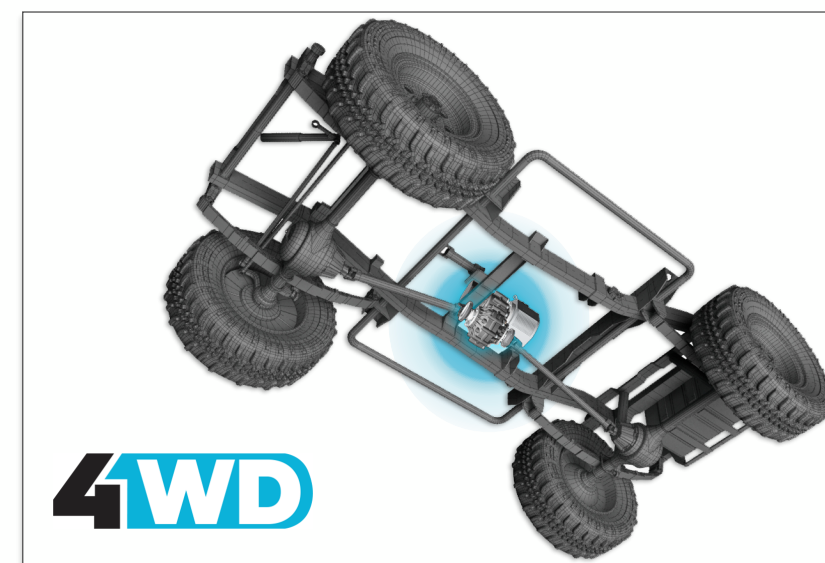
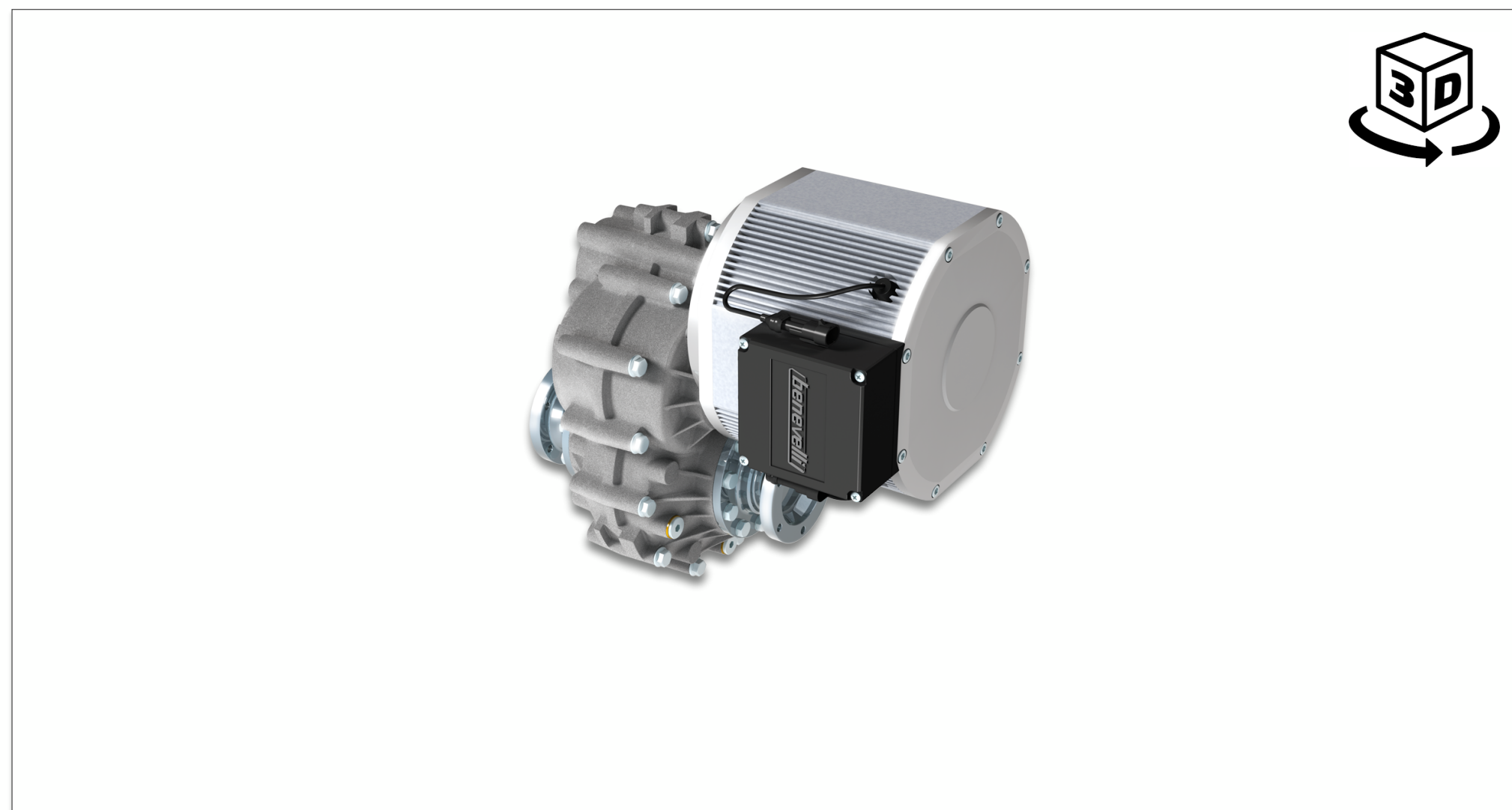


Pag. 17



# Central Drive Version

**TX2** SERIE TX2 SERIE TX2 SERIE TX2 SERIE TX2 PLUS TX2 PLUS TX2 PLUS TX2 PLUS TX2 PLUS



<b>Gearbox</b>	Gear Ratios	i	3 - 5
	Output Torque	Nm	1.000
	Input Speed (Max)	Rpm	7.200
	Static Load	kg	n/a
	Axle Type		n/a
	Track-width	mm	n/a
	Efficiency (Mech)	%	95
	Gears Finishing		Class 5
	Differential Type		n/a
	Differential Lock		n/a
	Service Brakes		n/a
	Fixation System		n/a
	Wheels Fitting		n/a

<b>Motor</b>	Motor Type		AMAC Serie	SMAC Serie
	Motor Technology		AC Induction	Synchronous IPM
	Power Range (Rated)	kW	3,0 ÷ 10,0 kW	5,5 to 20,0 kW
	Power Range (Peak)	kW	4,0 ÷ 16,0 kW	8,0 to 30,0 kW
	Rated Voltage	V	24 ÷ 600	24 ÷ 600
	IP Rating	IP	20 - 54 - 66 - 67	20 - 54 - 66 - 67 - 6K9K
	Motor Feedback		Hall effect 64 pulses	SinCos (resolver option)
	Thermal Class		F	F
	Thermal Protection		PTY 84-130	PTY 84-130
	Connections		Terminal box	Terminal box
	Parking/Safety Brake		Electromagnetic	Electromagnetic
	Braking Torque	Nm	20 ÷ 100	20 ÷ 100
	Manual Release		Option	Option

<b>Brakes</b>	Brake Fluid Type		n/a
	Brake Cylinder Ø	mm	n/a
	Volume Displ.	Cc	n/a
	Braking Torque	Nm	n/a
	Input Pressure	bar	n/a
	Brake Shoes	mm	n/a
	Brake Linings		n/a
	Adjusting system		n/a

# CVJ Version

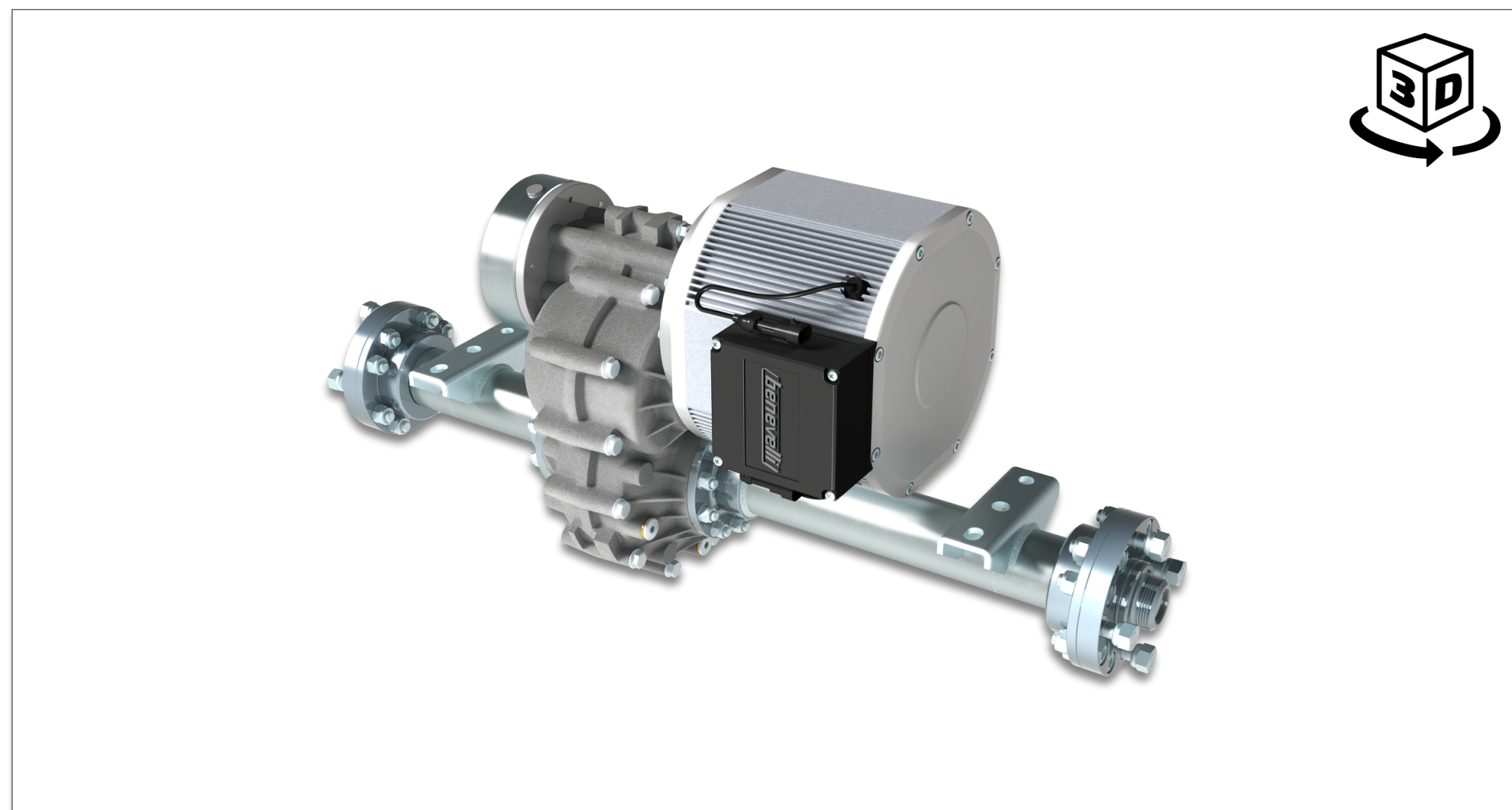
TX2 **TX2** SERIE TX2 SERIE TX2 SERIE TX2 PLUS TX2 PLUS TX2 PLUS TX2 PLUS TX2 PLUS



<b>Gearbox</b>	Gear Ratios	i	5 - 7 - 9 - 10 - 12 - 16 - 22 - 27 - 35 - 43 - 56 - 80	
	Output Torque	Nm	1.000	
	Input Speed (Max)	Rpm	7.200	
	Static Load	kg	400	
	Axle Type		n/a	
	Track-width	mm	n/a	
	Efficiency (Mech)	%	95	
	Gears Finishing		Class 5	
	Differential Type		Open type with four pinions	
	Differential Lock		n/a	
	Service Brakes		n/a	
	Fixation System		n/a	
	Wheels Fitting		n/a	
<b>Motor</b>	Motor Type		AMAC Serie	SMAC Serie
	Motor Technology		AC Induction	Synchronous IPM
	Power Range (Rated)	kW	3,0 ÷ 10,0 kW	5,5 to 20,0 kW
	Power Range (Peak)	kW	4,0 ÷ 16,0 kW	8,0 to 30,0 kW
	Rated Voltage	V	24 ÷ 600	24 ÷ 600
	IP Rating	IP	20 - 54 - 66 - 67	20 - 54 - 66 - 67 - 6K9K
	Motor Feedback		Hall effect 64 pulses	SinCos (resolver option)
	Thermal Class		F	F
	Thermal Protection		PTY 84-130	PTY 84-130
	Connections		Terminal box	Terminal box
	Parking/Safety Brake		Electromagnetic	Electromagnetic
	Braking Torque	Nm	20 ÷ 100	20 ÷ 100
	Manual Release		Option	Option
<b>Brakes</b>	Brake Fluid Type		n/a	
	Brake Cylinder Ø	mm	n/a	
	Volume Displ.	Cc	n/a	
	Braking Torque	Nm	n/a	
	Input Pressure	bar	n/a	
	Brake Shoes	mm	n/a	
	Brake Linings		n/a	
	Adjusting system		n/a	

# Wheel Hubs Version

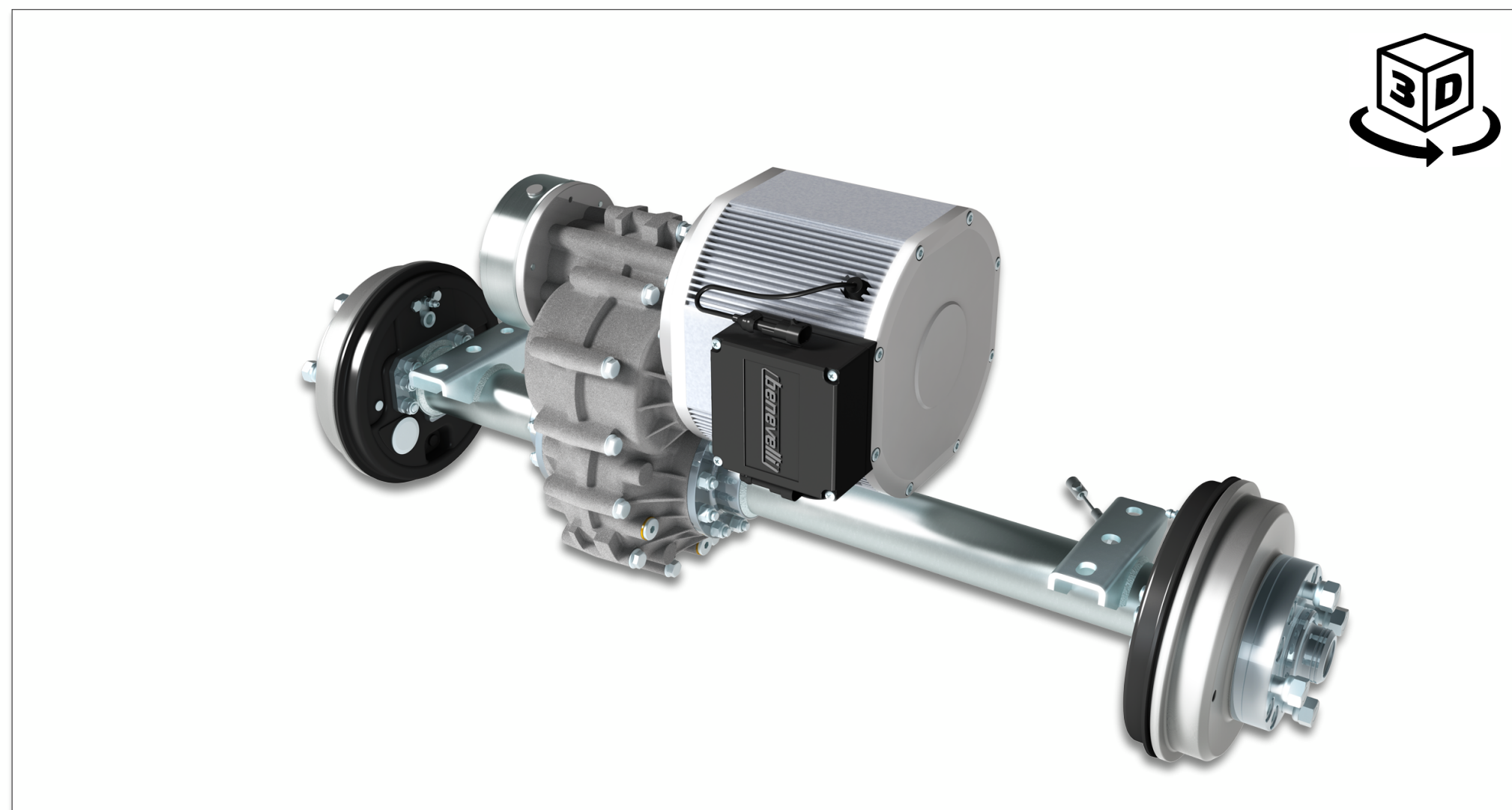
TX2<sub>SE</sub> TX2<sub>SE</sub> **TX2<sub>SE</sub>** TX2<sub>SE</sub> TX2<sub>PLUS</sub> TX2<sub>PLUS</sub> TX2<sub>PLUS</sub> TX2<sub>PLUS</sub> TX2<sub>PLUS</sub> TX2<sub>PLUS</sub>



<b>Gearbox</b>	Gear Ratios	i	5 - 7 - 9 - 10 - 12 - 16 - 22 - 27 - 35 - 43 - 56 - 80	
	Output Torque	Nm	1.000	
	Input Speed (Max)	Rpm	7.200	
	Static Load	kg	1.000	
	Axle Type		Full-floating spline axle-shafts	
	Track-width	mm	560 ÷ 1.988	
	Efficiency (Mech)	%	95	
	Gears Finishing		Class 5	
	Differential Type		Open type with four pinions	
	Differential Lock		Mechanical (option)	
	Service Brakes		n/a	
	Fixation System		Mounting brackets	
	Wheels Fitting		Hub piloted 4 - 5 studs	
<b>Motor</b>	Motor Type		AMAC Serie	SMAC Serie
	Motor Technology		AC Induction	Synchronous IPM
	Power Range (Rated)	kW	3,0 ÷ 10,0 kW	5,5 to 20,0 kW
	Power Range (Peak)	kW	4,0 ÷ 16,0 kW	8,0 to 30,0 kW
	Rated Voltage	V	24 ÷ 600	24 ÷ 600
	IP Rating	IP	20 - 54 - 66 - 67	20 - 54 - 66 - 67 - 6K9K
	Motor Feedback		Hall effect 64 pulses	SinCos (resolver option)
	Thermal Class		F	F
	Thermal Protection		PTY 84-130	PTY 84-130
	Connections		Terminal box	Terminal box
	Parking/Safety Brake		Electromagnetic	Electromagnetic
	Braking Torque	Nm	20 ÷ 100	20 ÷ 100
	Manual Release		Option	Option
<b>Brakes</b>	Brake Fluid Type		n/a	
	Brake Cylinder Ø	mm	n/a	
	Volume Displ.	Cc	n/a	
	Braking Torque	Nm	n/a	
	Input Pressure	bar	n/a	
	Brake Shoes	mm	n/a	
	Brake Linings		n/a	
	Adjusting system		n/a	

# Drum Brakes Version

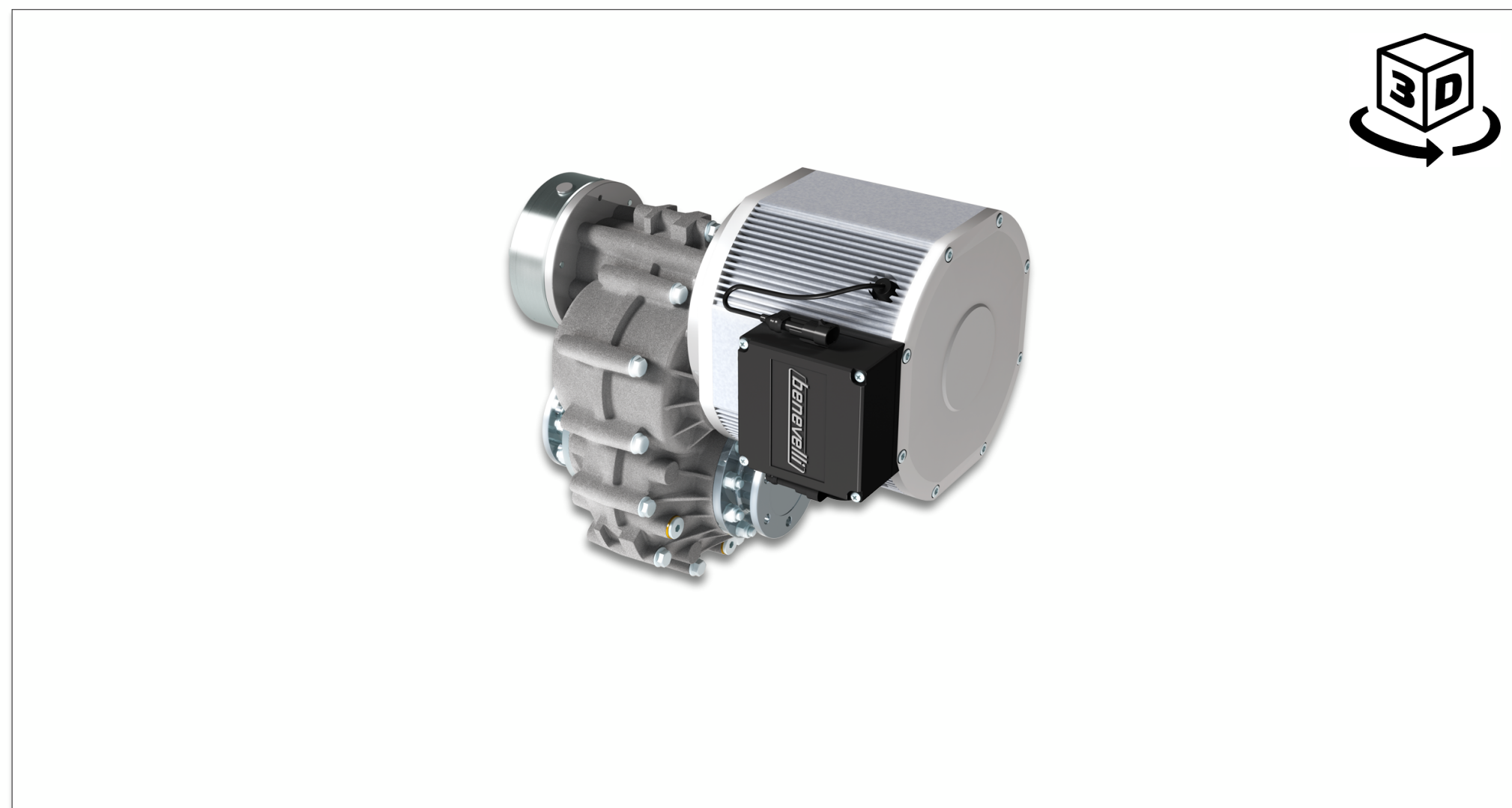
TX2<sub>SM</sub> TX2<sub>SM</sub> TX2<sub>SM</sub> **TX2<sub>SERIE</sub>** TX2<sub>PLUS</sub> TX2<sub>PLUS</sub> TX2<sub>PLUS</sub> TX2<sub>PLUS</sub> TX2<sub>PLUS</sub>



<b>Gearbox</b>	Gear Ratios	i	5 - 7 - 9 - 10 - 12 - 16 - 22 - 27 - 35 - 43 - 56 - 80	
	Output Torque	Nm	1.000	
	Input Speed (Max)	Rpm	7.200	
	Static Load	kg	1.000	
	Axle Type		Full-floating spline axle-shafts	
	Track-width	mm	560 ÷ 1.988	
	Efficiency (Mech)	%	95	
	Gears Finishing		Class 5	
	Differential Type		Open type with four pinions	
	Differential Lock		Mechanical (option)	
	Service Brakes		Hydraulic and Mechanical	
	Fixation System		Mounting brackets	
	Wheels Fitting		Hub piloted 4 - 5 studs	
<b>Motor</b>	Motor Type		AMAC Serie	SMAC Serie
	Motor Technology		AC Induction	Synchronous IPM
	Power Range (Rated)	kW	3,0 ÷ 10,0 kW	5,5 to 20,0 kW
	Power Range (Peak)	kW	4,0 ÷ 16,0 kW	8,0 to 30,0 kW
	Rated Voltage	V	24 ÷ 600	24 ÷ 600
	IP Rating	IP	20 - 54 - 66 - 67	20 - 54 - 66 - 67 - 6K9K
	Motor Feedback		Hall effect 64 pulses	SinCos (resolver option)
	Thermal Class		F	F
	Thermal Protection		PTY 84-130	PTY 84-130
	Connections		Terminal box	Terminal box
	Parking/Safety Brake		Electromagnetic	Electromagnetic
	Braking Torque	Nm	20 ÷ 100	20 ÷ 100
	Manual Release		Option	Option
<b>Brakes</b>	Brake Fluid Type		DOT4	
	Brake Cylinder Ø	mm	22	
	Volume Displ.	Cc	0,8 ÷ 1,0	
	Braking Torque	Nm	1.000	
	Input Pressure	bar	85	
	Brake Shoes	mm	180 x 30	
	Brake Linings		Bremskerl 5504	
	Adjusting system		Self-registering	

# Central Drive Version

TX2<sub>SMAC</sub> TX2<sub>SMAC</sub> TX2<sub>SMAC</sub> TX2<sub>SMAC</sub> **TX2<sub>SMAC</sub> SERIE PLUS** TX2<sub>SMAC</sub> TX2<sub>SMAC</sub> TX2<sub>SMAC</sub> TX2<sub>SMAC</sub>



<b>Gearbox</b>	Gear Ratios	i	3 - 5	
	Output Torque	Nm	1.600	
	Input Speed (Max)	Rpm	7.200	
	Static Load	kg	n/a	
	Axle Type		n/a	
	Track-width	mm	n/a	
	Efficiency (Mech)	%	95	
	Gears Finishing		Class 5	
	Differential Type		n/a	
	Differential Lock		n/a	
	Service Brakes		n/a	
	Fixation System		n/a	
	Wheels Fitting		n/a	
<b>Motor</b>	Motor Type		AMAC Serie	SMAC Serie
	Motor Technology		AC Induction	Synchronous IPM
	Power Range (Rated)	kW	3,0 ÷ 10,0 kW	5,5 to 20,0 kW
	Power Range (Peak)	kW	4,0 ÷ 16,0 kW	8,0 to 30,0 kW
	Rated Voltage	V	24 ÷ 600	24 ÷ 600
	IP Rating	IP	20 - 54 - 66 - 67	20 - 54 - 66 - 67 - 6K9K
	Motor Feedback		Hall effect 64 pulses	SinCos (resolver option)
	Thermal Class		F	F
	Thermal Protection		PTY 84-130	PTY 84-130
	Connections		Terminal box	Terminal box
	Parking/Safety Brake		Electromagnetic	Electromagnetic
	Braking Torque	Nm	20 ÷ 100	20 ÷ 100
	Manual Release		Option	Option
<b>Brakes</b>	Brake Fluid Type		n/a	
	Brake Cylinder Ø	mm	n/a	
	Volume Displ.	Cc	n/a	
	Braking Torque	Nm	n/a	
	Input Pressure	bar	n/a	
	Brake Shoes	mm	n/a	
	Brake Linings		n/a	
	Adjusting system		n/a	

# CVJ Version

TX2 TX2 TX2 TX2 TX2 **TX2** TX2 TX2 TX2



<b>Gearbox</b>	Gear Ratios	i	5 - 7 - 9 - 10 - 12 - 16 - 22 - 27 - 35 - 43 - 56 - 80	
	Output Torque	Nm	1.600	
	Input Speed (Max)	Rpm	7.200	
	Static Load	kg	400	
	Axle Type		n/a	
	Track-width	mm	n/a	
	Efficiency (Mech)	%	95	
	Gears Finishing		Class 5	
	Differential Type		Open type with four pinions	
	Differential Lock		n/a	
	Service Brakes		n/a	
	Fixation System		n/a	
	Wheels Fitting		n/a	
<b>Motor</b>	Motor Type		AMAC Serie	SMAC Serie
	Motor Technology		AC Induction	Synchronous IPM
	Power Range (Rated)	kW	3,0 ÷ 10,0 kW	5,5 to 20,0 kW
	Power Range (Peak)	kW	4,0 ÷ 16,0 kW	8,0 to 30,0 kW
	Rated Voltage	V	24 ÷ 600	24 ÷ 600
	IP Rating	IP	20 - 54 - 66 - 67	20 - 54 - 66 - 67 - 6K9K
	Motor Feedback		Hall effect 64 pulses	SinCos (resolver option)
	Thermal Class		F	F
	Thermal Protection		PTY 84-130	PTY 84-130
	Connections		Terminal box	Terminal box
	Parking/Safety Brake		Electromagnetic	Electromagnetic
	Braking Torque	Nm	20 ÷ 100	20 ÷ 100
	Manual Release		Option	Option
<b>Brakes</b>	Brake Fluid Type		n/a	
	Brake Cylinder Ø	mm	n/a	
	Volume Displ.	Cc	n/a	
	Braking Torque	Nm	n/a	
	Input Pressure	bar	n/a	
	Brake Shoes	mm	n/a	
	Brake Linings		n/a	
	Adjusting system		n/a	

# Dual Motor Version

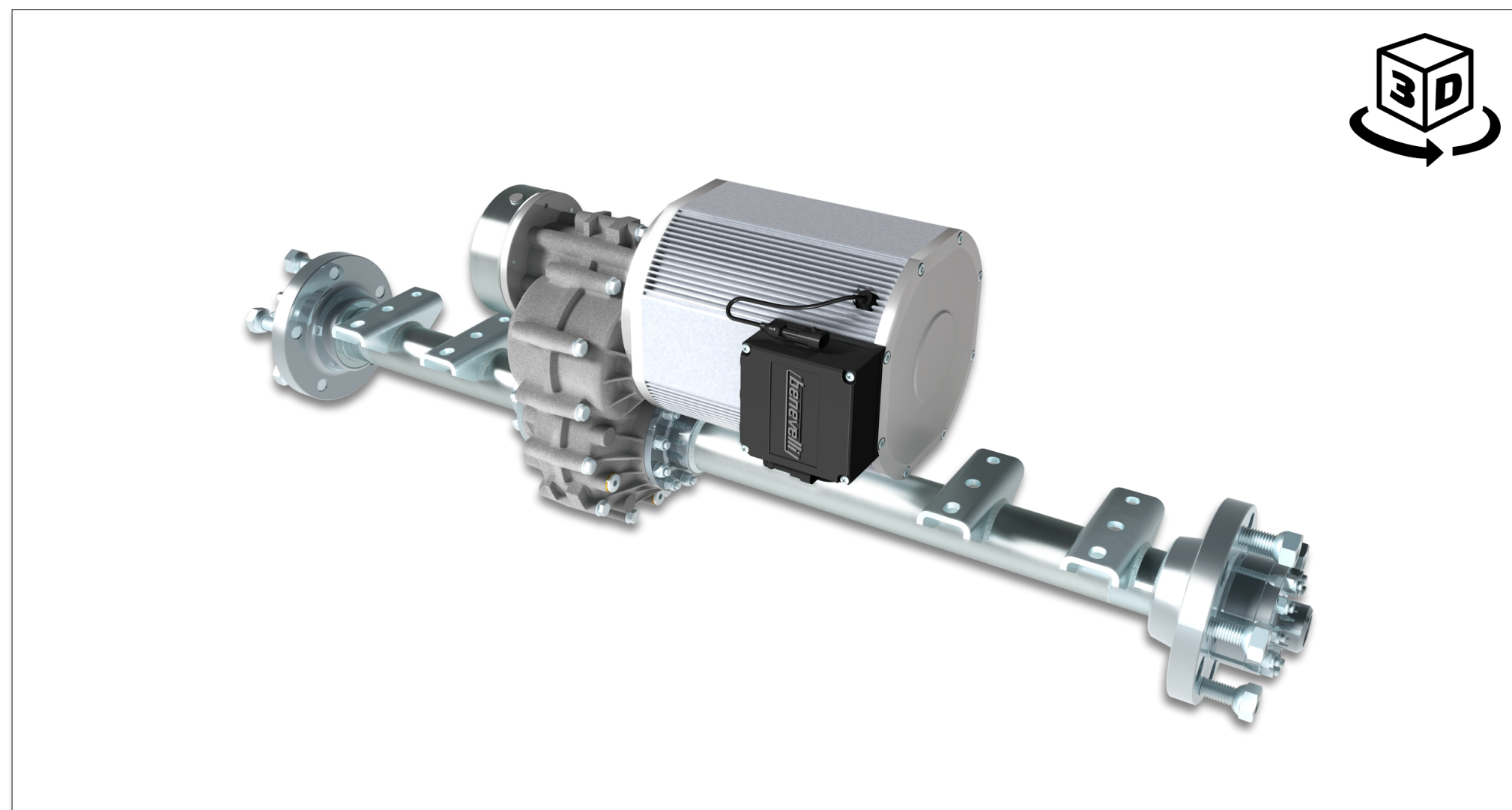
TX2 TX2 TX2 TX2 TX2 TX2 **TX2** TX2 TX2



<b>Gearbox</b>	Gear Ratios	i	7 - 12 - 27 - 34	
	Output Torque	Nm	1.600	
	Input Speed (Max)	Rpm	7.200	
	Static Load	kg	n/a	
	Axle Type		n/a	
	Track-width	mm	n/a	
	Efficiency (Mech)	%	95	
	Gears Finishing		Class 5	
	Differential Type		Open type with four pinions	
	Differential Lock		Mechanical (option)	
	Service Brakes		n/a	
	Fixation System		n/a	
Wheels Fitting		n/a		
<b>Motor</b>	Motor Type		AMAC Serie	SMAC Serie
	Motor Technology		AC Induction	Synchronous IPM
	Power Range (Rated)	kW	3,0 ÷ 10,0 kW	5,5 to 20,0 kW
	Power Range (Peak)	kW	4,0 ÷ 16,0 kW	8,0 to 30,0 kW
	Rated Voltage	V	24 ÷ 600	24 ÷ 600
	IP Rating	IP	20 - 54 - 66 - 67	20 - 54 - 66 - 67 - 6K9K
	Motor Feedback		Hall effect 64 pulses	SinCos (resolver option)
	Thermal Class		F	F
	Thermal Protection		PTY 84-130	PTY 84-130
	Connections		Terminal box	Terminal box
	Parking/Safety Brake		Electromagnetic	Electromagnetic
	Braking Torque	Nm	20 ÷ 100	20 ÷ 100
Manual Release		Option	Option	
<b>Brakes</b>	Brake Fluid Type		n/a	
	Brake Cylinder Ø	mm	n/a	
	Volume Displ.	Cc	n/a	
	Braking Torque	Nm	n/a	
	Input Pressure	bar	n/a	
	Brake Shoes	mm	n/a	
	Brake Linings		n/a	
	Adjusting system		n/a	

# Wheel Hubs Version

TX2 TX2 TX2 TX2 TX2 TX2 TX2 TX2 **TX2** TX2

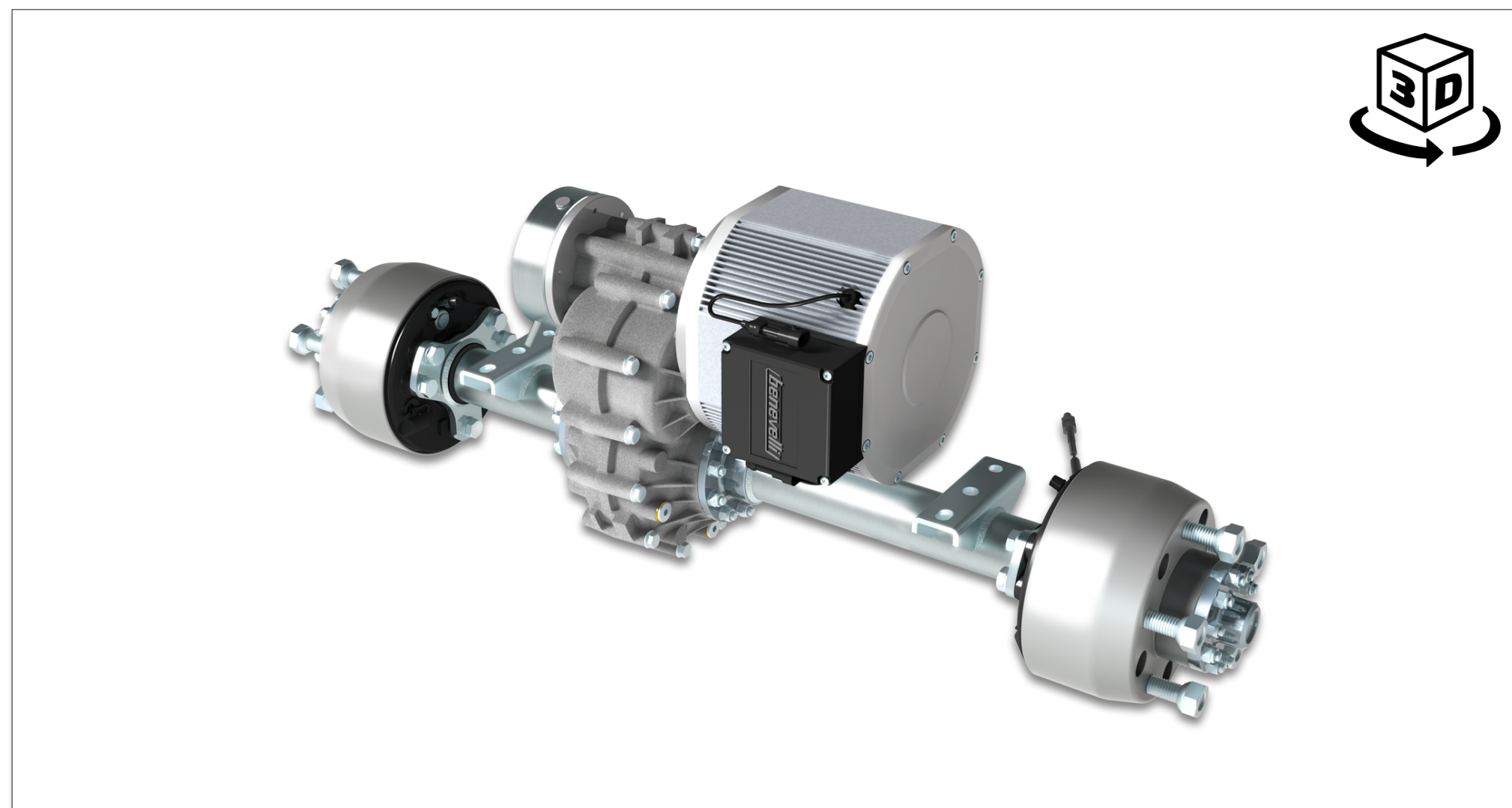


<b>Gearbox</b>	Gear Ratios	i	5 - 7 - 9 - 10 - 12 - 16 - 22 - 27 - 35 - 43 - 56 - 80	
	Output Torque	Nm	1.600	
	Input Speed (Max)	Rpm	7.200	
	Static Load	kg	1.600	
	Axle Type		Full-floating spline axle-shafts	
	Track-width	mm	560 ÷ 1.988	
	Efficiency (Mech)	%	95	
	Gears Finishing		Class 5	
	Differential Type		Open type with four pinions	
	Differential Lock		Mechanical (option)	
	Service Brakes		n/a	
	Fixation System		Mounting brackets	
Wheels Fitting		Hub piloted 4 - 5 studs		
<b>Motor</b>	Motor Type		AMAC Serie	SMAC Serie
	Motor Technology		AC Induction	Synchronous IPM
	Power Range (Rated)	kW	3,0 ÷ 10,0 kW	5,5 to 20,0 kW
	Power Range (Peak)	kW	4,0 ÷ 16,0 kW	8,0 to 30,0 kW
	Rated Voltage	V	24 ÷ 600	24 ÷ 600
	IP Rating	IP	20 - 54 - 66 - 67	20 - 54 - 66 - 67 - 6K9K
	Motor Feedback		Hall effect 64 pulses	SinCos (resolver option)
	Thermal Class		F	F
	Thermal Protection		PTY 84-130	PTY 84-130
	Connections		Terminal box	Terminal box
	Parking/Safety Brake		Electromagnetic	Electromagnetic
	Braking Torque	Nm	20 ÷ 100	20 ÷ 100
Manual Release		Option	Option	
<b>Brakes</b>	Brake Fluid Type		n/a	
	Brake Cylinder Ø	mm	n/a	
	Volume Displ.	Cc	n/a	
	Braking Torque	Nm	n/a	
	Input Pressure	bar	n/a	
	Brake Shoes	mm	n/a	
	Brake Linings		n/a	
	Adjusting system		n/a	



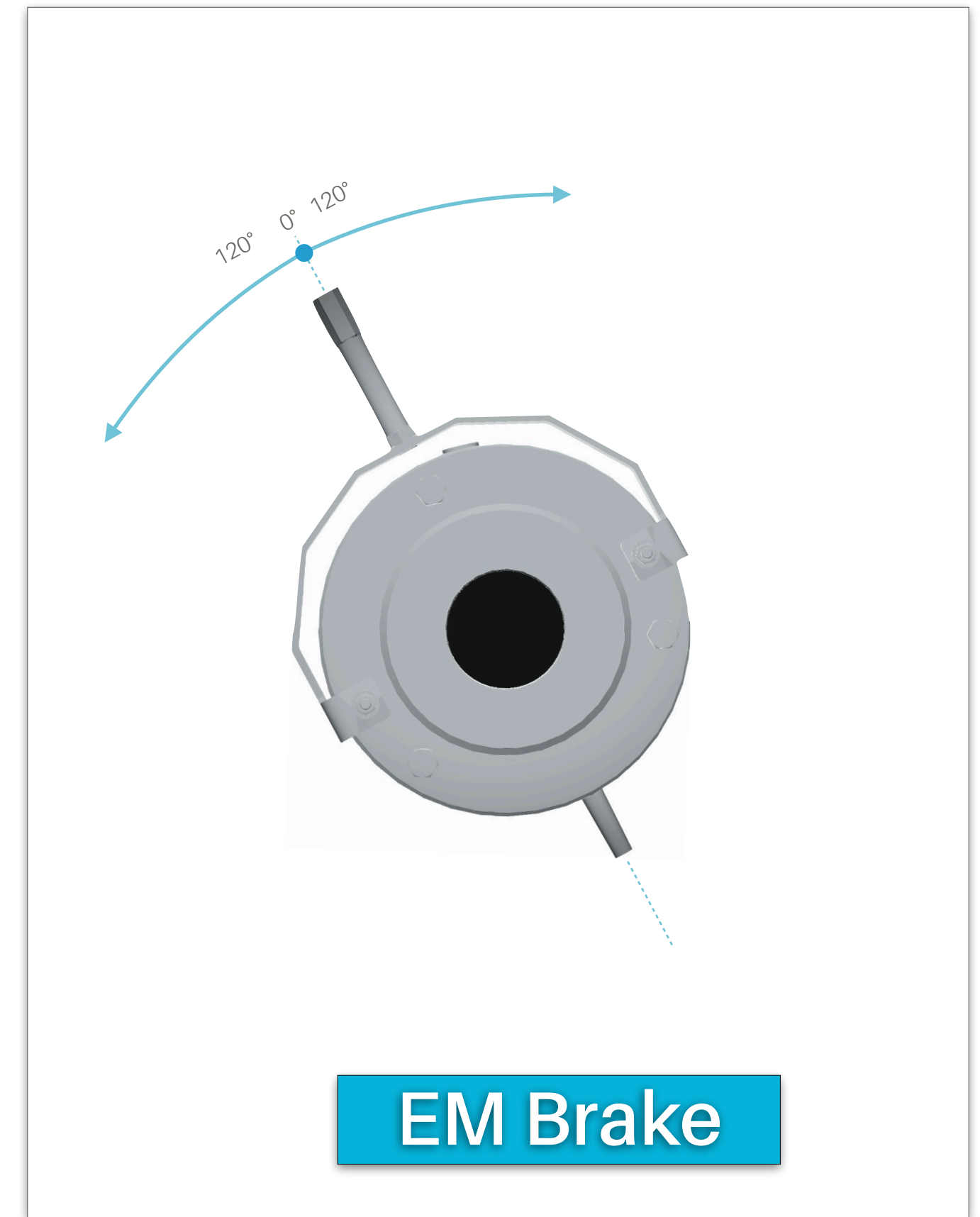
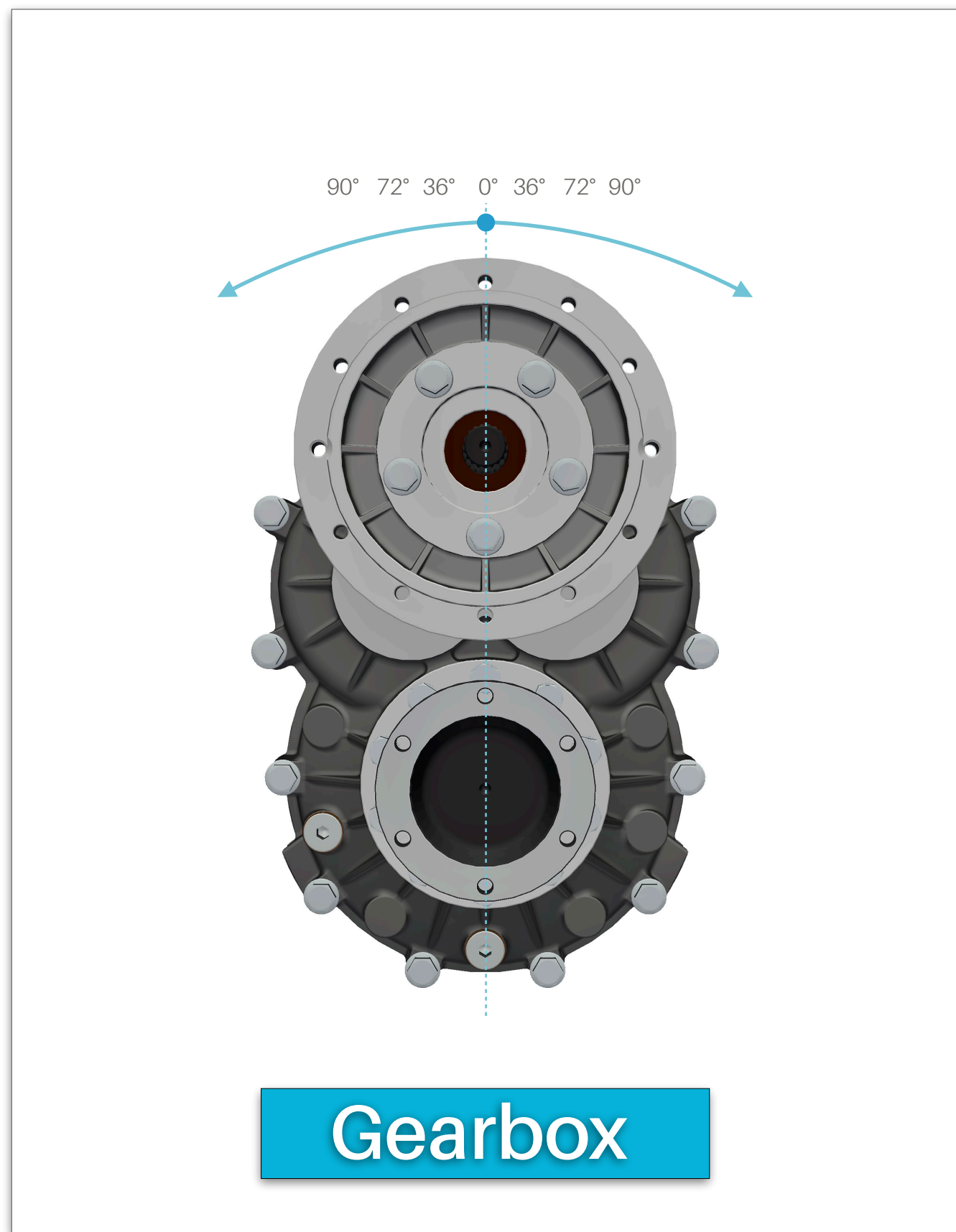
# Drum Brakes Version

TX2 TX2 TX2 TX2 TX2 TX2 TX2 TX2 TX2 TX2 **TX2** SERIE PLUS

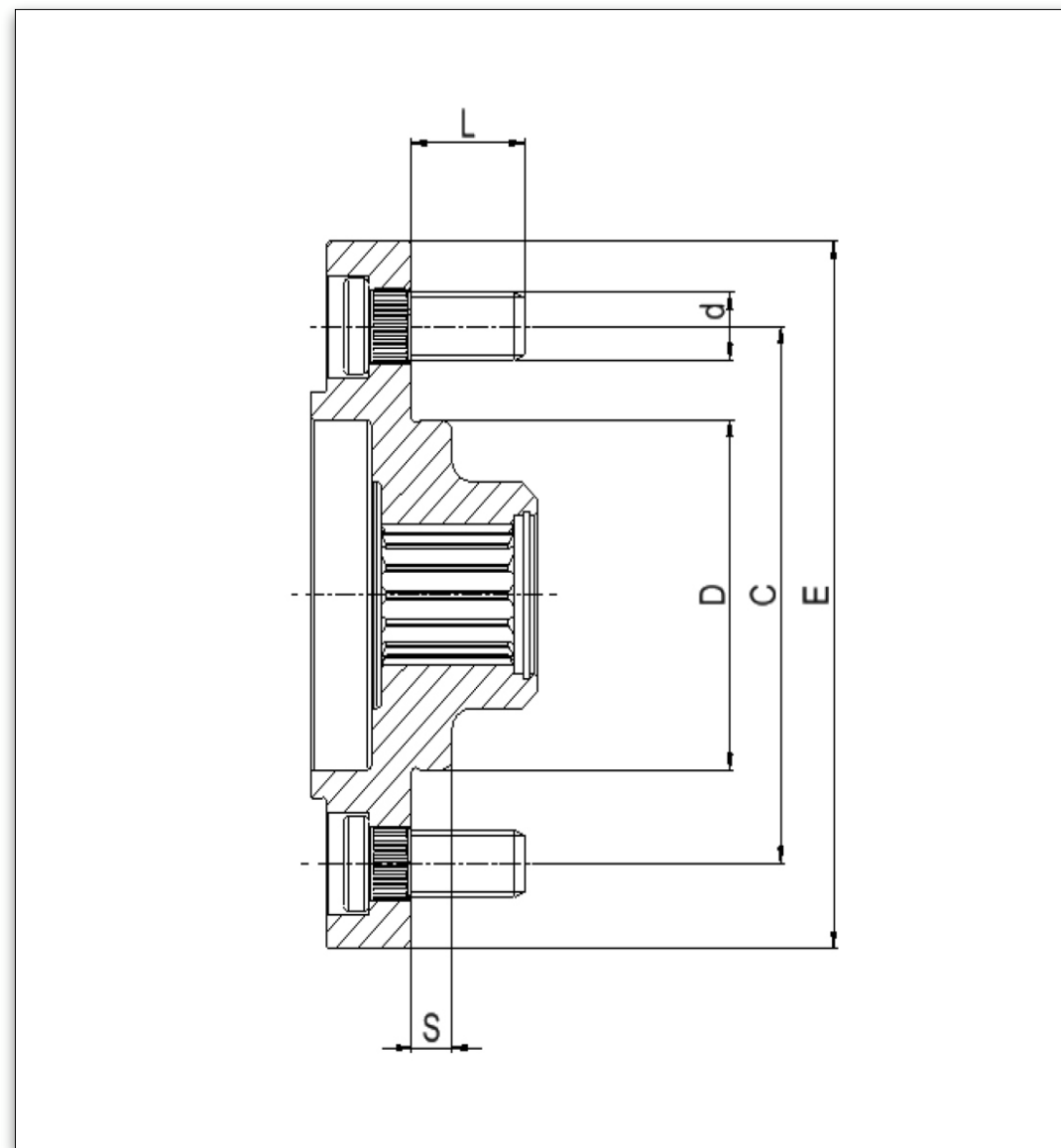


<b>Gearbox</b>	Gear Ratios	i	5 - 7 - 9 - 10 - 12 - 16 - 22 - 27 - 35 - 43 - 56 - 80	
	Output Torque	Nm	1.600	
	Input Speed (Max)	Rpm	7.200	
	Static Load	kg	1.600	
	Axle Type		Full-floating spline axle-shafts	
	Track-width	mm	560 ÷ 1.988	
	Efficiency (Mech)	%	95	
	Gears Finishing		Class 5	
	Differential Type		Open type with four pinions	
	Differential Lock		Mechanical (option)	
	Service Brakes		Hydraulic and Mechanical	
	Fixation System		Mounting brackets	
	Wheels Fitting		Hub piloted 4 - 5 studs	
<b>Motor</b>	Motor Type		AMAC Serie	SMAC Serie
	Motor Technology		AC Induction	Synchronous IPM
	Power Range (Rated)	kW	3,0 ÷ 10,0 kW	5,5 to 20,0 kW
	Power Range (Peak)	kW	4,0 ÷ 16,0 kW	8,0 to 30,0 kW
	Rated Voltage	V	24 ÷ 600	24 ÷ 600
	IP Rating	IP	20 - 54 - 66 - 67	20 - 54 - 66 - 67 - 6K9K
	Motor Feedback		Hall effect 64 pulses	SinCos (resolver option)
	Thermal Class		F	F
	Thermal Protection		PTY 84-130	PTY 84-130
	Connections		Terminal box	Terminal box
	Parking/Safety Brake		Electromagnetic	Electromagnetic
	Braking Torque	Nm	20 ÷ 100	20 ÷ 100
	Manual Release		Option	Option
<b>Brakes</b>	Brake Fluid Type		DOT4	
	Brake Cylinder Ø	mm	22,2	
	Volume Displ.	Cc	1,5 ÷ 1,7	
	Braking Torque	Nm	1.500	
	Input Pressure	bar	85	
	Brake Shoes	mm	170 x 40	
	Brake Linings		Beral 1537	
	Adjusting system		Manual	

# Mounting Options

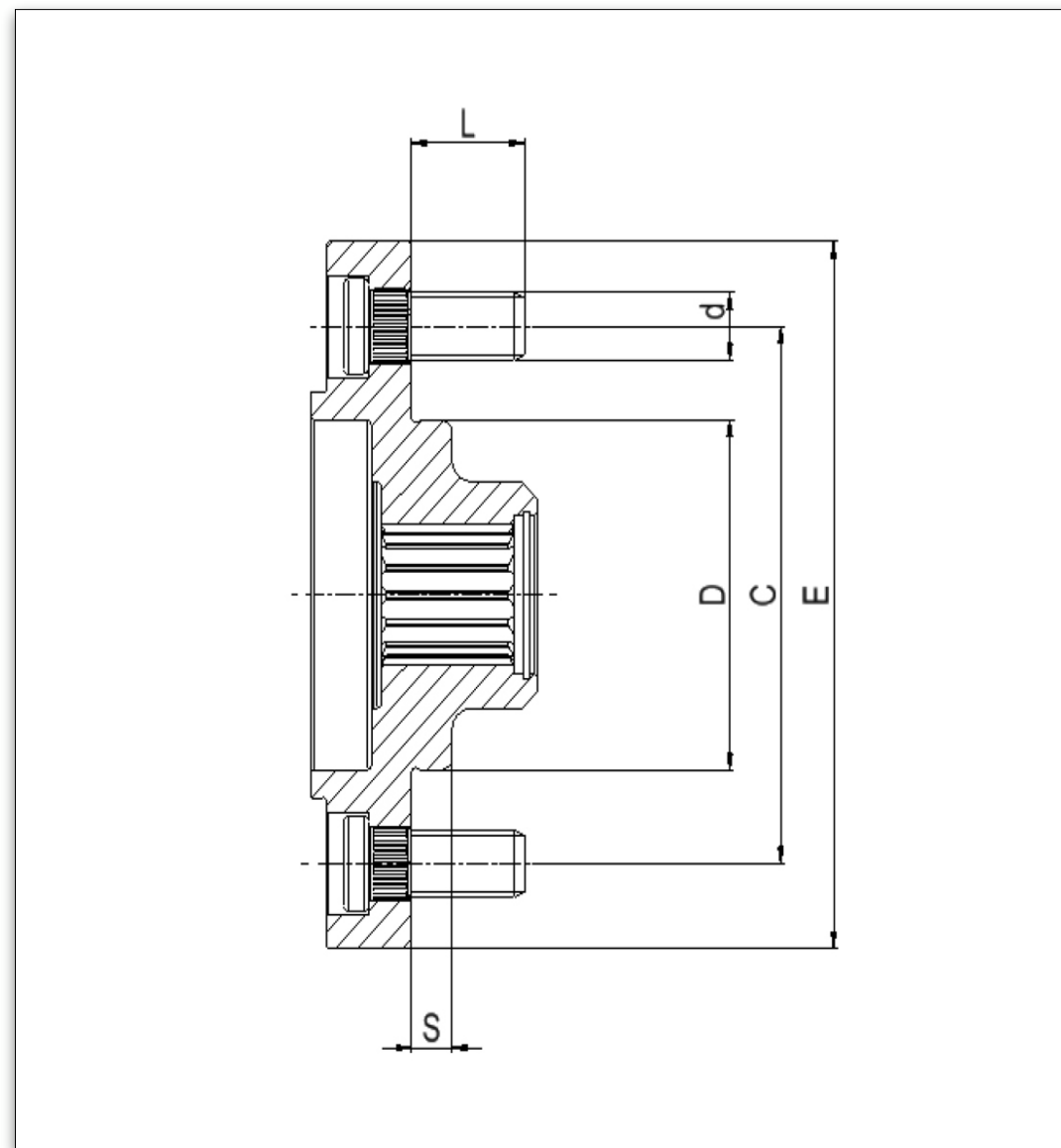


# Wheel Hubs Options



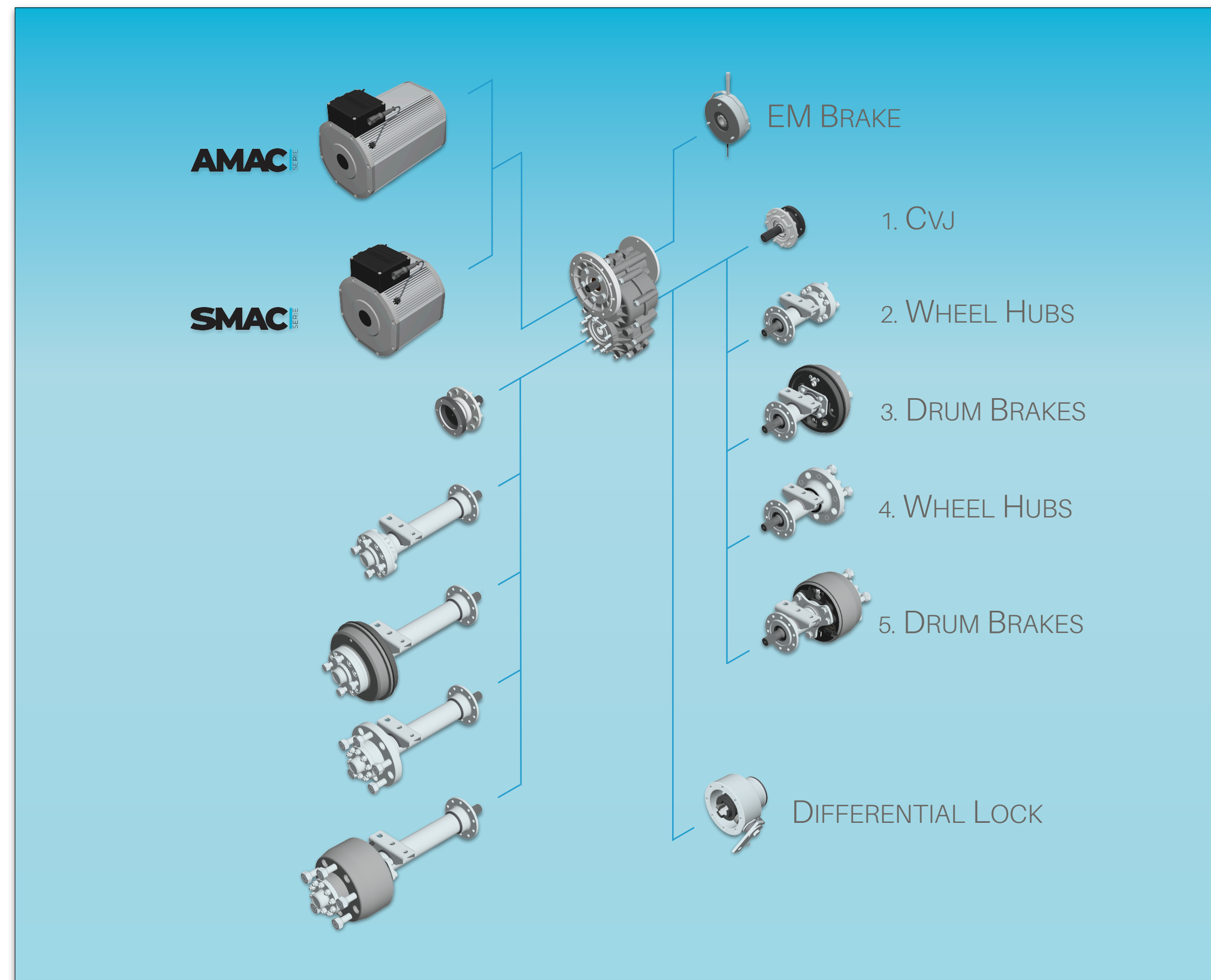
Type	E	D	C	M	N°	S	TX2 SERIE	TX2 SERIE PLUS
Balilla	125	62	95	M12x1.5	4	8	●	
Fiat	125	58	98	M12x1.5	4	8	●	
BMW	125	60	100	M12x1.5	4	8	●	
USA	125	60	101.6	M12x1.5	4	8	●	
Tedesco	125	57	100	M12x1.5	4	8	●	
Francia	138	85	115	M10	4	8	●	
Internat.	164	94	140	M16x1.5	5	8	●	
Internat.	174	94	140	M16x1.5	5	28,5		●
Custom 1	125	55	100	M12x1.5	4	8	●	
Custom 2	135	66	110	M12x1.5	4	8	●	
Custom 3	154	80	130	M14	4	8	●	
Custom 4	174	108,2	139,7	M12x1.5	6	12		●

# Drum Brakes Options



Type	E	D	C	M	N°	S	TX2 SERIE	TX2 SERIE PLUS
Balilla	125	62	95	M12x1.5	4	8	●	
Fiat	125	58	98	M12x1.5	4	8	●	
BMW	125	60	100	M12x1.5	4	8	●	
USA	125	60	101.6	M12x1.5	4	8	●	
Tedesco	125	57	100	M12x1.5	4	8	●	
Francia	138	85	115	M10	4	8	●	
Internat.	164	94	140	M16x1.5	5	8	●	
Internat.	189	94	140	M16x1.5	5	28,5		●
Custom 1	125	55	100	M12x1.5	4	8	●	
Custom 2	135	66	110	M12x1.5	4	8	●	
Custom 3	154	80	130	M14	4	8	●	
Custom 4	174	108,2	139,7	M12x1.5	6	12		●
Custom 5	189	108,2	139,7	M12x1.5	6	12		●
Custom 6	189	110	145	M14x1,5	5	12		●

# Order Code



Coding	Product Category	
91	Electric Transaxles	
	Serie	
2	TX2 Serie	
	Gear Ratio	
1	1:10,17	
2	1:12,64	
3	1:16,10	
4	1:22,28	
5	1:27,69	
6	1:34,41	
7	1:35,26	
8	1:43,81	
9	1:55,80	
A	1:07,05	
B	1:03,05	
C	1:05,67	
D	1:08,98	
E	1:80,11	
	Electric Motor	Available On
0	None	<b>TX2</b> <b>TX2</b>
7	AMAC Serie	<b>TX2</b> <b>TX2</b>
8	AMAC Serie + EM Brake	<b>TX2</b> <b>TX2</b>
9	SMAC Serie	<b>TX2</b> <b>TX2</b>
10	SMAC Serie + EM Brake	<b>TX2</b> <b>TX2</b>
	Configuration	Available On
0	None	<b>TX2</b> <b>TX2</b>
1	CVJ	<b>TX2</b> <b>TX2</b>
3	Wheel hubs	<b>TX2</b> <b>TX2</b>
4	Drum brakes	<b>TX2</b> <b>TX2</b>
5	Drum brakes	<b>TX2</b> <b>TX2</b>
7	Wheel hubs	<b>TX2</b> <b>TX2</b>

# Start Now

## Discover Benevelli Method

Facing with an increasing number of different components such as electric motors, inverters, PTOs, hydraulic pumps, steering, batteries, transmissions knowing how to define and choose the right models is of fundamental importance for the success of the project.

From this need comes Benevelli Method, a new scientific approach to quickly define which are the ideal components for your e-vehicle.

START NOW



# #GoElectric

